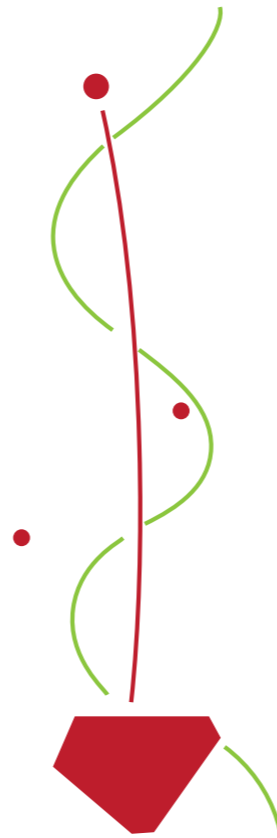


# green invasion

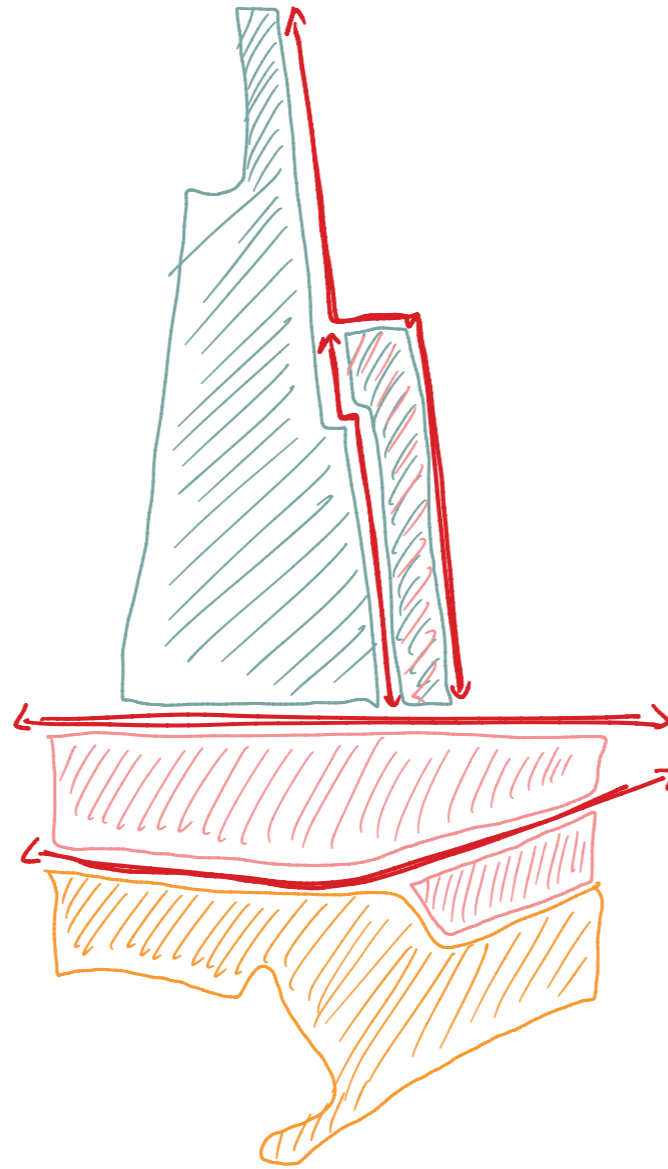
[first people then mobility]



[000]  
site C

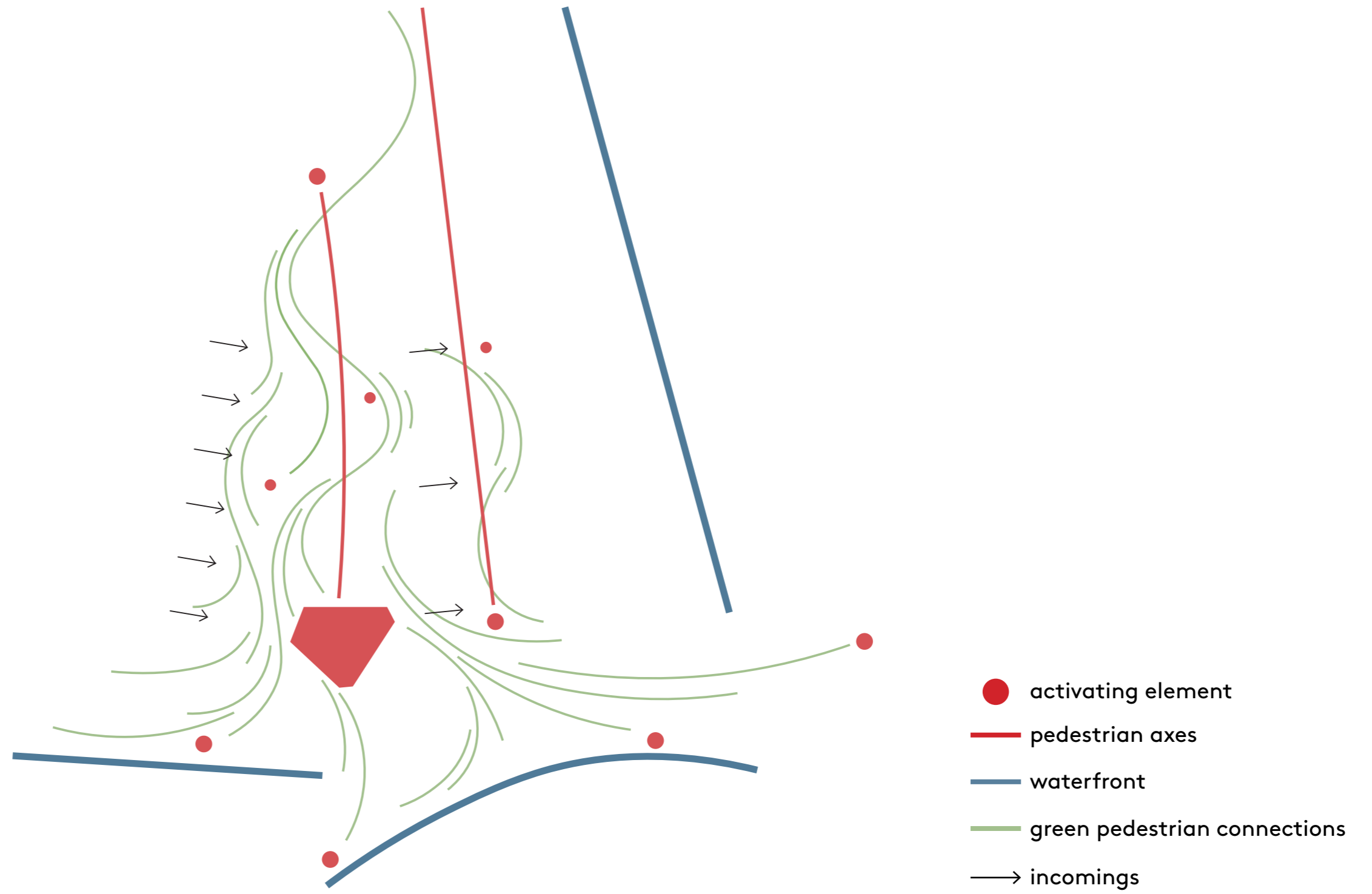


[001]  
analysis



- borders
- area1  
concrete harbor
- area2  
the inbetween
- area3  
street & parking confusion
- area4  
not defining

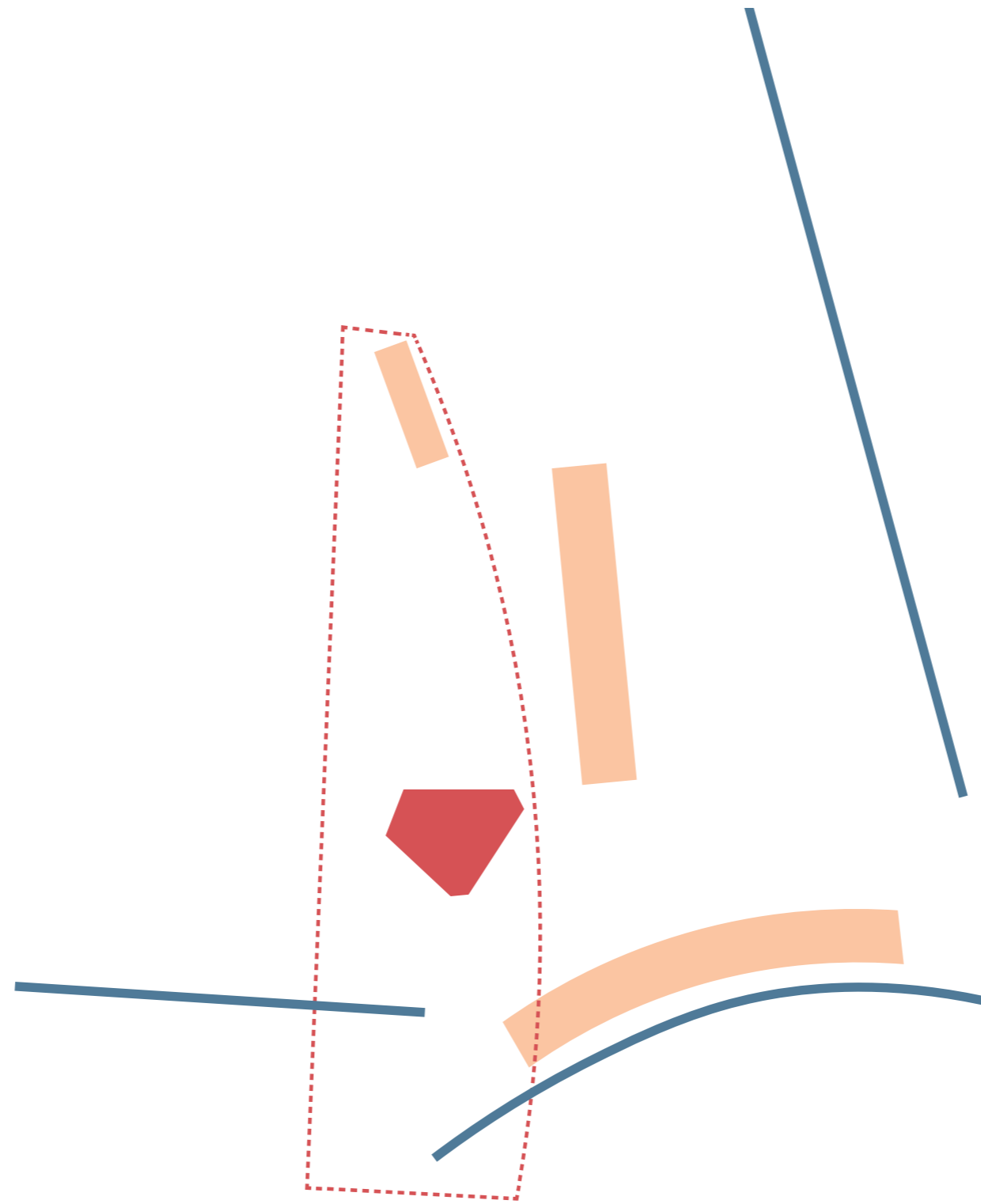
[002]  
concept  
communication concept



[002]

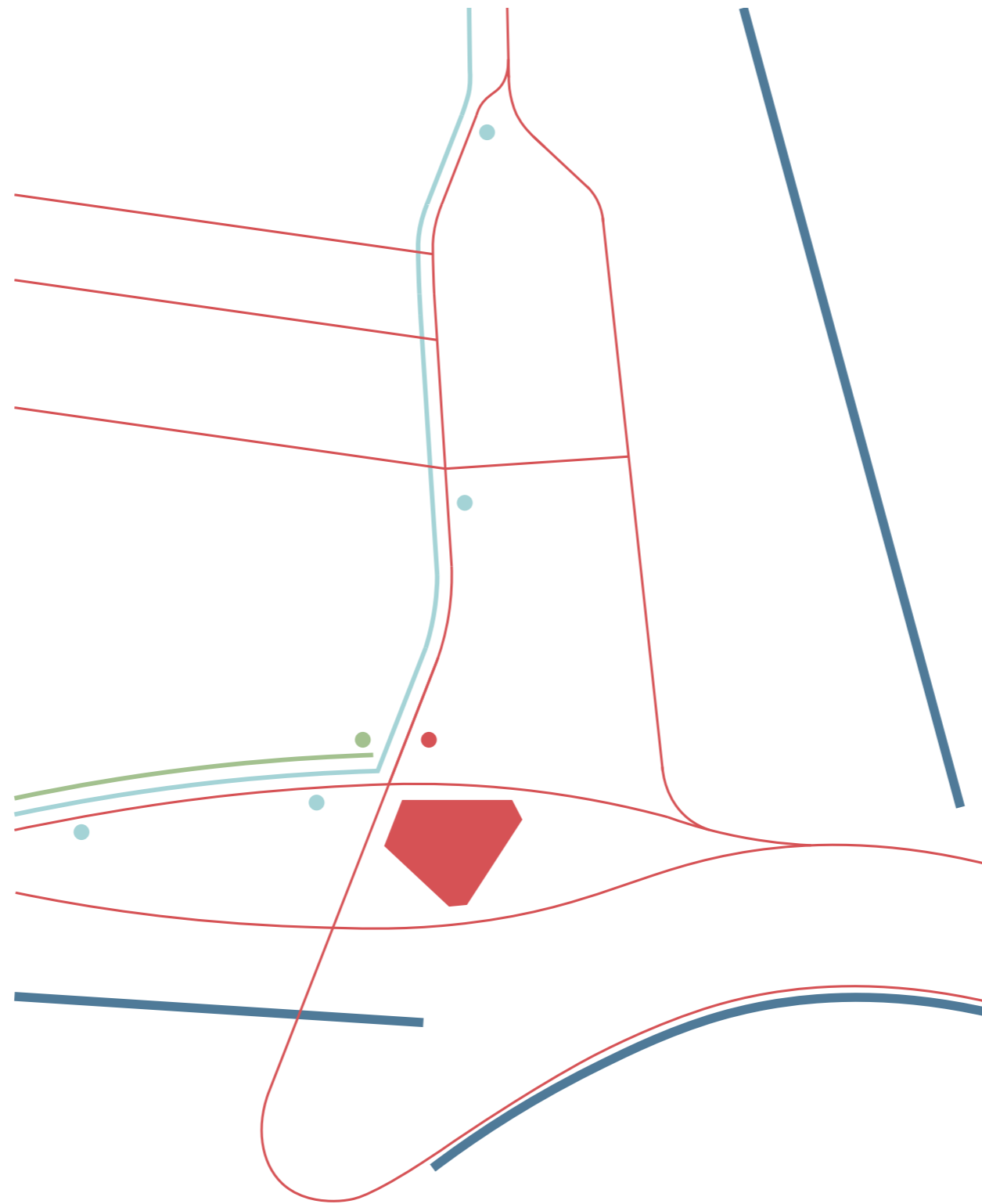
## concept

commercial & non-commercial  
attraction|facilities



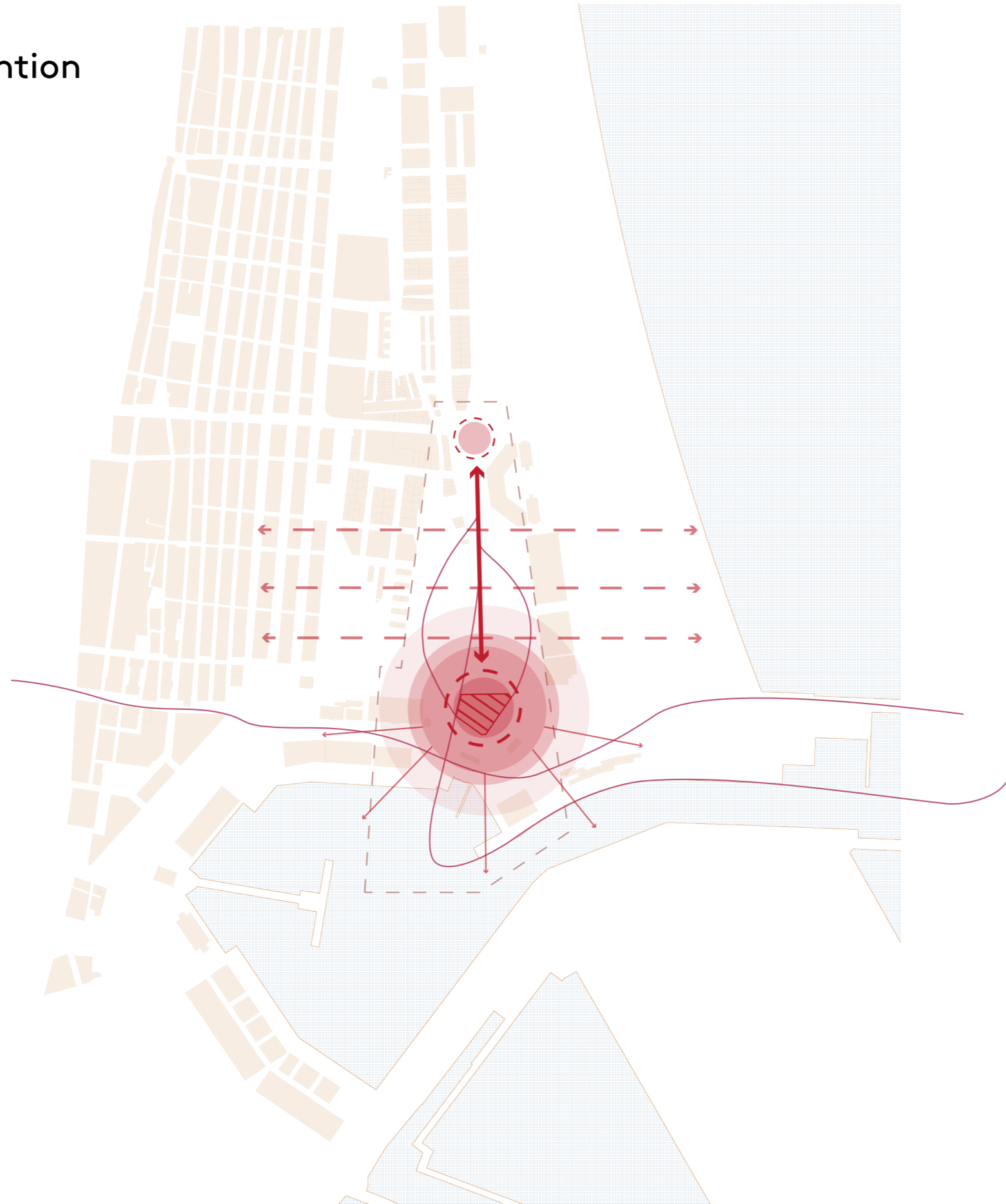
- cultural/community space
- waterfront
- - green space + public facilities  
& possibility of city events
- commercial facilities+  
gastronomy

[002]  
concept  
transportation

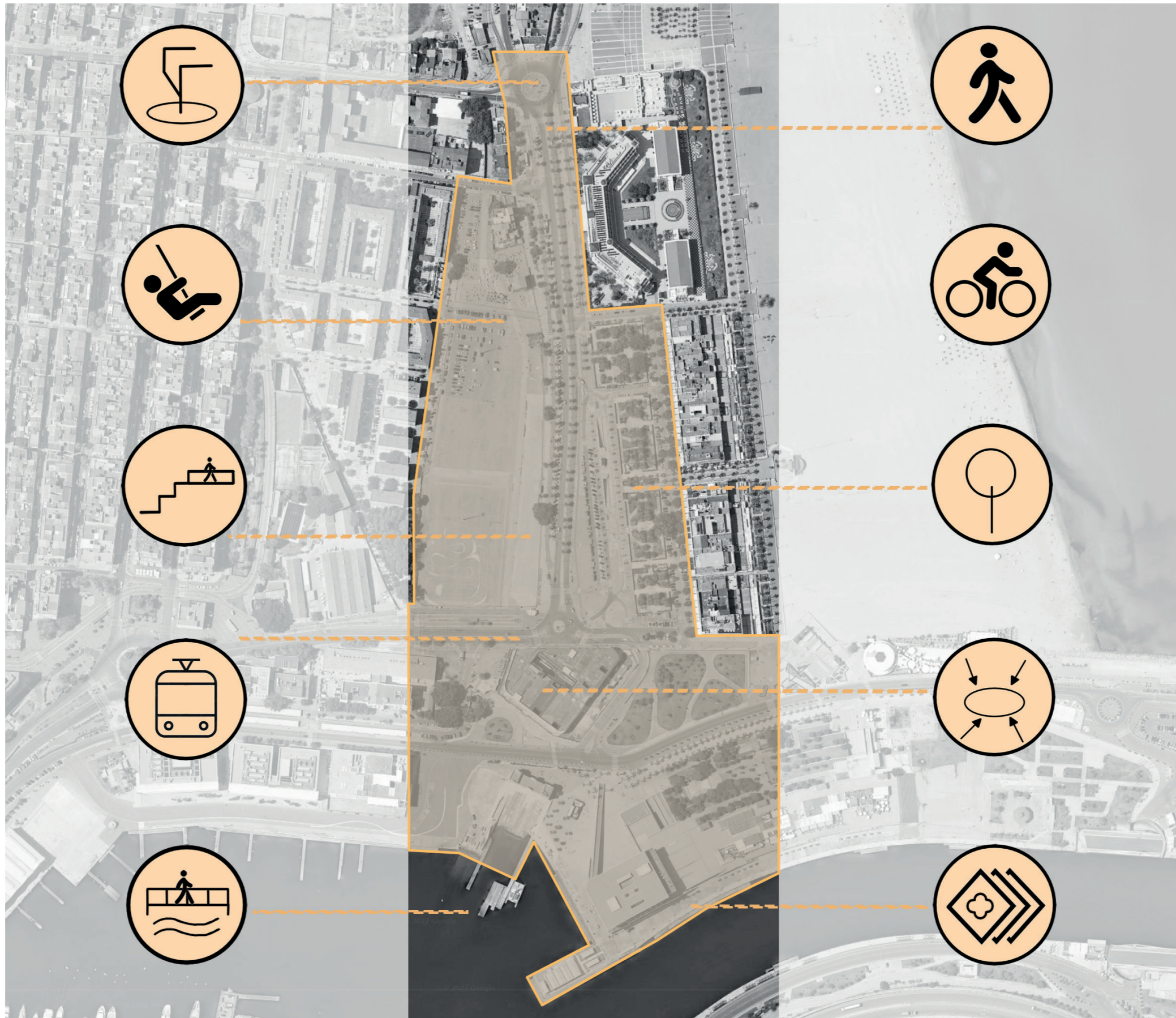


- cultural/community space
- waterfront
- cycling paths
- bus line
- tram line
- bicycle stops
- bus stops
- tram stops

[004]  
urban space intervention



[003]  
activation strategies



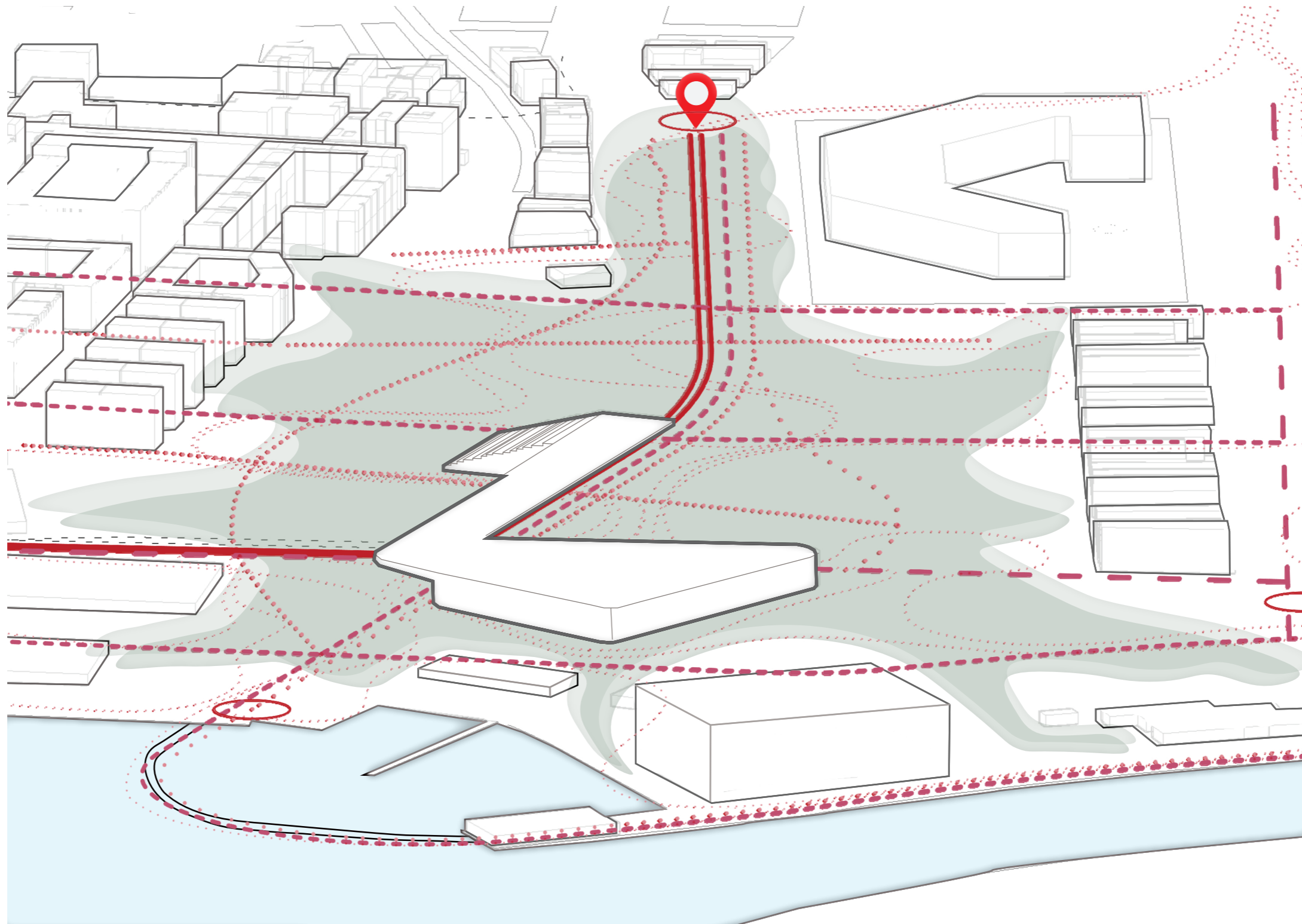
[005]  
master site plan  
scale 1:1000



- activating element
- - - cycling paths
- === bus line
- guiding line pedestrians
- ... main axis
- greenery



[006]  
axonometry | axis



[007]  
green harbor



[007]  
the heart



# ACPS

[activation of contemporary public space]

